

QUICK SETUP

Model : TX-SR505/TX-SR8550

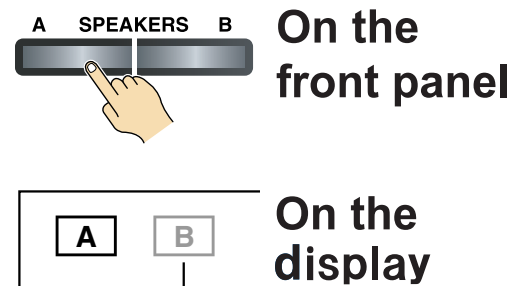


Thank you for purchasing this product.
This quick setup sheet shows the typical hookup method for connecting speakers and AV components (DVD player, TV, cable/satellite receiver).
For more detailed hookup information and operating instructions, please see the Instruction Manual.

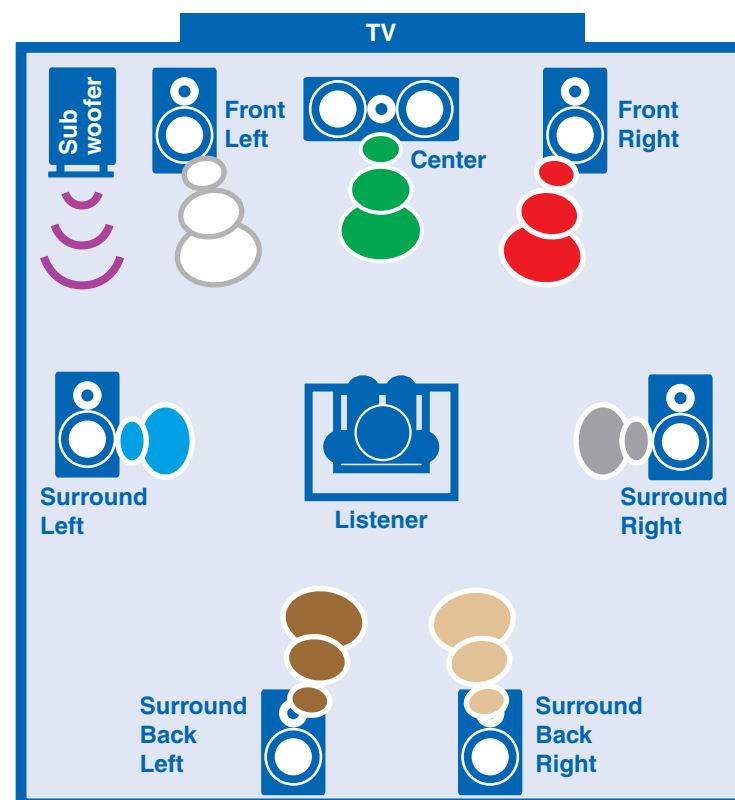
First of all,
turn on speaker set A.

Press the SPEAKERS [A] button on the front panel. Make sure that speaker indicator A is shown on the display.

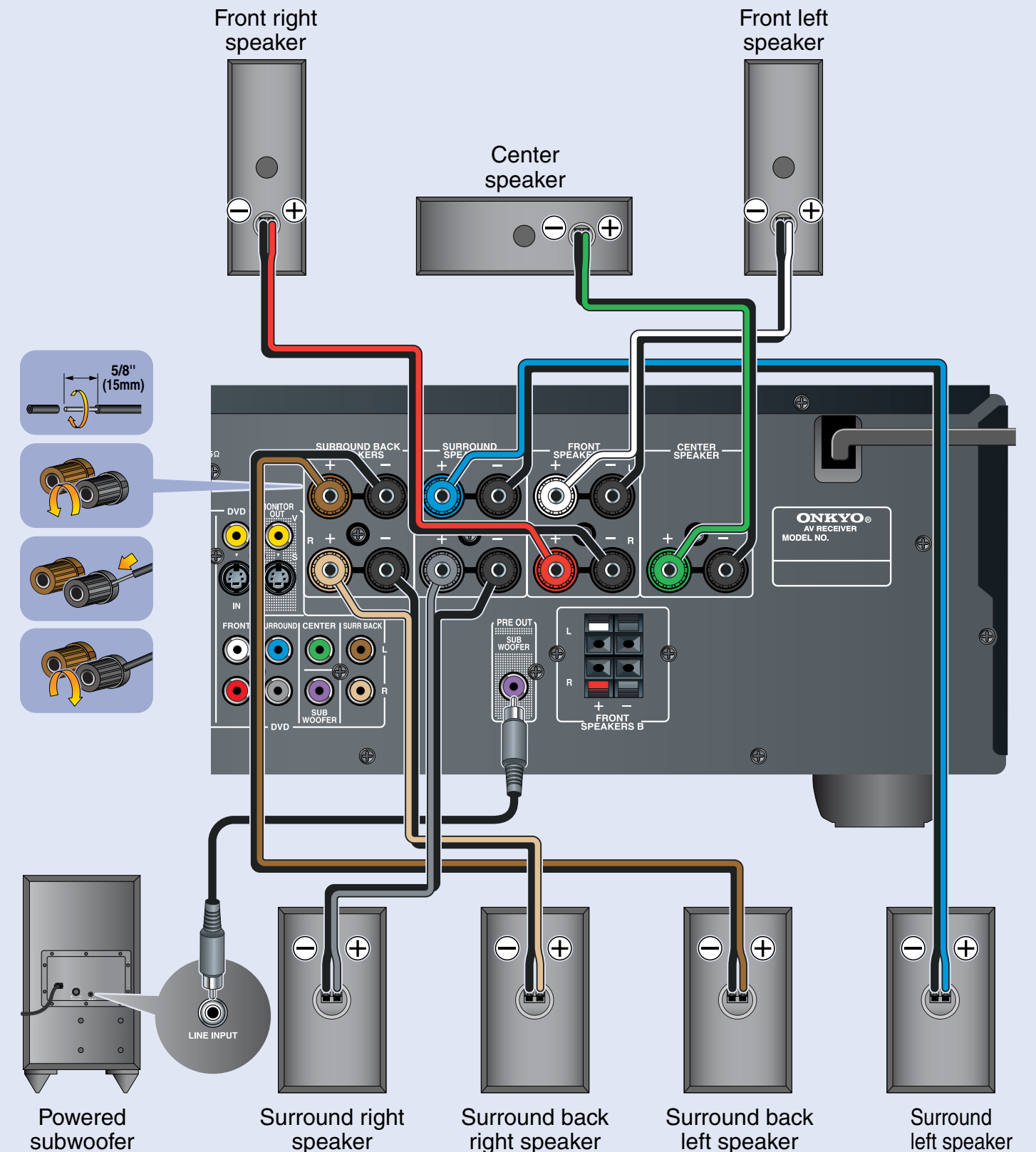
Turn off speaker set B when not in use. Indicator should be off.



Speaker Set A Layout (Main Room)



Speaker Set A Hookup



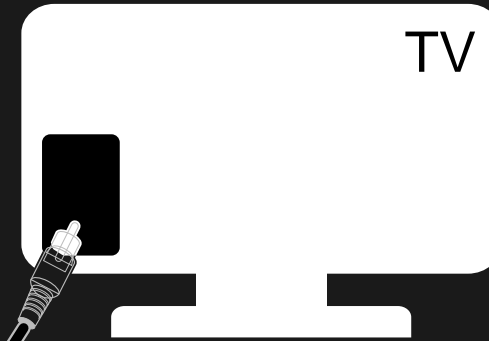
See the other side of this sheet for the AV component hookup.



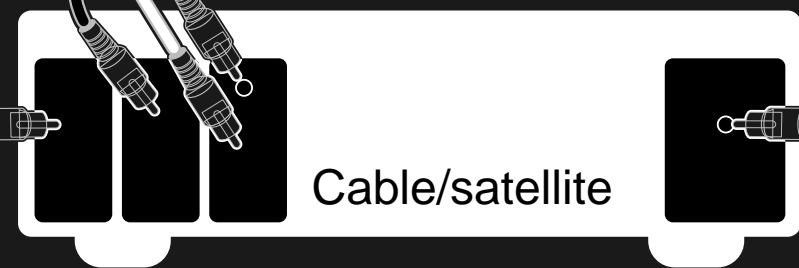
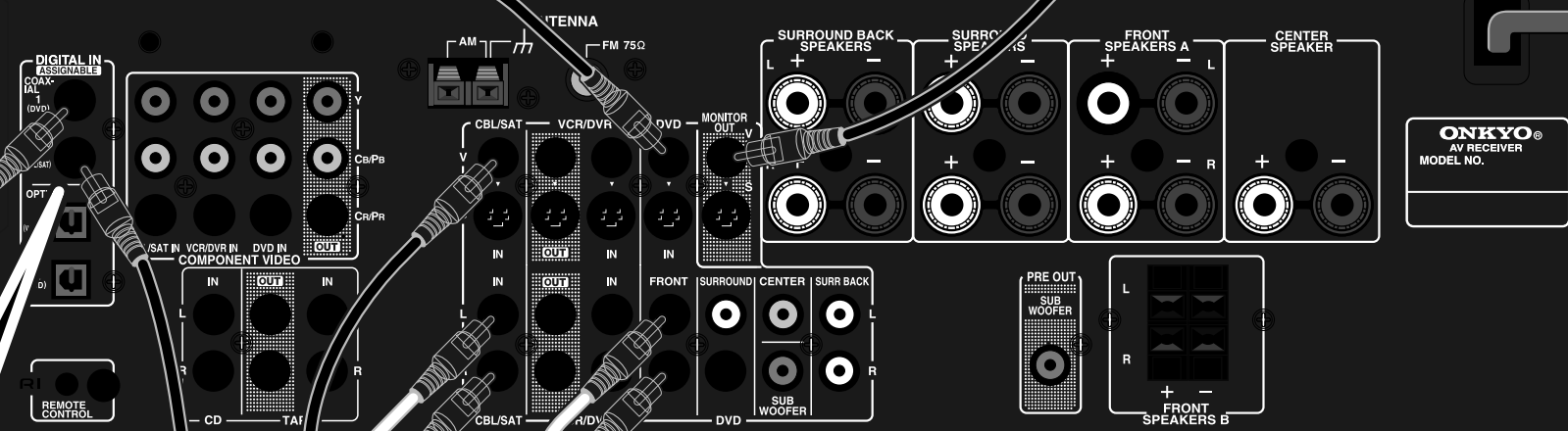
AV Component Hookup



DVD player



Please ensure the monitor input (VIDEO 1, VIDEO 2, VIDEO 3, etc.) selected corresponds to actual connection used.



Coaxial feed from TV antenna
If you are not using Cable/satellite box,
please refer to the instruction manual.

See the other side of this sheet for the Speaker hookup.

