

# ONKYO®

## Remote Interactive Dock

# DS-A1

## Instruction Manual

Thank you for purchasing an Onkyo product. Please read this manual carefully before making any connections or using this product. By following these instructions, you'll get the best audio performance and the most listening pleasure from your Onkyo product. Keep this manual for future reference.



## Contents

---

<b>Getting Started</b> .....	<b>5</b>
About the RI Dock.....	5
Features .....	5
Package Contents .....	6
Compatible iPods .....	6
Getting to Know the RI Dock.....	7
Hooking Up the RI Dock .....	8
<b>Using the RI Dock</b> .....	<b>9</b>
Putting Your iPod in the RI Dock .....	9
Function Overview .....	10
Controlling Your iPod.....	12
iPod Functions .....	14
<b>Troubleshooting</b> .....	<b>15</b>
<b>Specifications</b> .....	<b>15</b>



## WARNING:

TO REDUCE THE RISK OF FIRE OR ELECTRIC SHOCK, DO NOT EXPOSE THIS APPARATUS TO RAIN OR MOISTURE.

## CAUTION:

TO REDUCE THE RISK OF ELECTRIC SHOCK, DO NOT REMOVE COVER (OR BACK). NO USER-SERVICEABLE PARTS INSIDE. REFER SERVICING TO QUALIFIED SERVICE PERSONNEL.



The lightning flash with arrowhead symbol, within an equilateral triangle, is intended to alert the user to the presence of uninsulated "dangerous voltage" within the product's enclosure that may be of sufficient magnitude to constitute a risk of electric shock to persons.



The exclamation point within an equilateral triangle is intended to alert the user to the presence of important operating and maintenance (servicing) instructions in the literature accompanying the appliance.

## Important Safety Instructions

---

1. Read these instructions.
2. Keep these instructions.
3. Heed all warnings.
4. Follow all instructions.
5. Do not use this apparatus near water.
6. Clean only with dry cloth.
7. Do not block any ventilation openings. Install in accordance with the manufacturer's instructions.
8. Do not install near any heat sources such as radiators, heat registers, stoves, or other apparatus (including amplifiers) that produce heat.
9. Do not defeat the safety purpose of the polarized or grounding-type plug. A polarized plug has two blades with one wider than the other. A grounding type plug has two blades and a third grounding prong. The wide blade or the third prong are provided for your safety. If the provided plug does not fit into your outlet, consult an electrician for replacement of the obsolete outlet.
10. Protect the power cord from being walked on or pinched particularly at plugs, convenience receptacles, and the point where they exit from the apparatus.
11. Only use attachments/accessories specified by the manufacturer.
12. Unplug this apparatus during lightning storms or when unused for long periods of time.

## Important Safety Instructions—Continued

---

13. Refer all servicing to qualified service personnel. Servicing is required when the apparatus has been damaged in any way, such as power-supply cord or plug is damaged, liquid has been spilled or objects have fallen into the apparatus, the apparatus has been exposed to rain or moisture, does not operate normally, or has been dropped.
14. **Damage Requiring Service**  
Unplug the apparatus from the wall outlet and refer servicing to qualified service personnel under the following conditions:
  - A. When the power-supply cord or plug is damaged,
  - B. If liquid has been spilled, or objects have fallen into the apparatus,
  - C. If the apparatus has been exposed to rain or water,
  - D. If the apparatus does not operate normally by following the operating instructions. Adjust only those controls that are covered by the operating instructions as an improper adjustment of other controls may result in damage and will often require extensive work by a qualified technician to restore the apparatus to its normal operation,
  - E. If the apparatus has been dropped or damaged in any way, and
  - F. When the apparatus exhibits a distinct change in performance this indicates a need for service.

## Precautions

---

1. **Recording Copyright**—Unless it's for personal use only, recording copyrighted material is illegal without the permission of the copyright holder.
2. **Care**—Occasionally you should dust the unit all over with a soft cloth. For stubborn stains, use a soft cloth dampened with a weak solution of mild detergent and water. Dry the unit immediately afterwards with a clean cloth. Don't use abrasive cloths, thinners, alcohol, or other chemical solvents, because they may damage the finish or remove the panel lettering.
3. **Never Touch this Unit with Wet Hands**—Never handle this unit or its power cord while your hands are wet or damp. If water or any other liquid gets inside this unit, have it checked by your Onkyo dealer.

### For U.S. models

#### FCC Information for User

#### CAUTION:

The user changes or modifications not expressly approved by the party responsible for compliance could void the user's authority to operate the equipment.

#### NOTE:

This equipment has been tested and found to comply with the limits for a Class B digital device, pursuant to Part 15 of the FCC Rules. These limits are designed to provide reasonable protection against harmful interference in a residential installation.

## Precautions—Continued

This equipment generates, uses and can radiate radio frequency energy and, if not installed and used in accordance with the instructions, may cause harmful interference to radio communications. However, there is no guarantee that interference will not occur in a particular installation. If this equipment does cause harmful interference to radio or television reception, which can be determined by turning the equipment off and on, the user is encouraged to try to correct the interference by one or more of the following measures:

- Reorient or relocate the receiving antenna.
- Increase the separation between the equipment and receiver.
- Connect the equipment into an outlet on a circuit different from that to which the receiver is connected.
- Consult the dealer or an experienced radio/TV technician for help.

### For Canadian Models

For models having a power cord with a polarized plug:

#### CAUTION:

TO PREVENT ELECTRIC SHOCK, MATCH WIDE BLADE OF PLUG TO WIDE SLOT, FULLY INSERT.

#### Modèle canadien

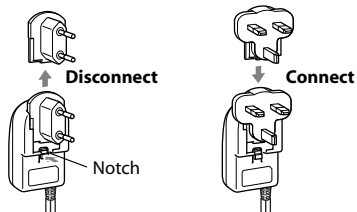
Sur les modèles dont la fiche est polarisée:

#### ATTENTION:

POUR ÉVITER LES CHOCS ÉLECTRIQUES, INTRODUIRE LA LAME LA PLUS LARGE DE LA FICHE DANS LA BORNE CORRESPONDANTE DE LA PRISE ET POUSSER JUSQU'AU FOND.

### For British models

Before use, fit the appropriate AC plug adapter to the AC adapter.



### For European Models

#### Declaration of Conformity

We, ONKYO EUROPE  
ELECTRONICS GmbH  
LIEGNITZERSTRASSE 6,  
82194 GROEBENZELL,  
GERMANY



declare in own responsibility, that the ONKYO product described in this instruction manual is in compliance with the corresponding technical standards such as EN60065, EN55013, EN55020 and EN61000-3-2, -3-3.

GROEBENZELL, GERMANY

I. MORI

ONKYO EUROPE ELECTRONICS GmbH

# Getting Started

---

## About the RI Dock

With the Onkyo RI Dock, you can easily play the music stored on your Apple\* iPod\* through your Onkyo audio system and enjoy great sound, and use your Onkyo remote controller to operate your iPod. Music from your iPod is fed via the RI Dock to your amp and speakers, and video from an iPod photo can be fed via the RI Dock to your TV.

**RI**, which stands for Remote Interactive, is an exclusive Onkyo control system that allows **RI**-compatible Onkyo audio components to be controlled with a single remote controller. In addition, all components can be turned on or off together, and the amp will automatically turn on and select the appropriate input source when playback is started on a source component.

In this manual, the DS-A1 Remote Interactive Dock is referred to as the "RI Dock."

---

\*Apple and iPod are trademarks of Apple Computer, Inc., registered in the U.S. and other countries.

## Features

- Play the music stored on your iPod through your Onkyo audio system with great sound**
- Control your iPod with your Onkyo remote controller†**
- S-Video output for watching iPod photo slideshows on TV**
- Supports all iPods with a dock connector, including the iPod mini and iPod photo**
- Charges your iPod battery while you enjoy your music**

For the latest information on the RI Dock, see the Onkyo Web site at: [www.onkyo.com](http://www.onkyo.com)

---

†Requires remote controller supplied with **RI** compatible Onkyo receiver or amp. Available functionality depends on the **RI** amp and the generation of iPod.

### Package Contents

Make sure you have the following items:

- **DS-A1 Remote Interactive Dock**
- **AC adapter**



- **Audio cable**
- **S-Video cable**
- **RI cable**



- **Instruction Manual**

- **iPod adapters**



For iPod mini



For iPod (30GB, 40GB) & iPod photo (60GB)



For iPod (10GB, 15GB, 20GB)  
& iPod photo (30 GB)

### Compatible iPods

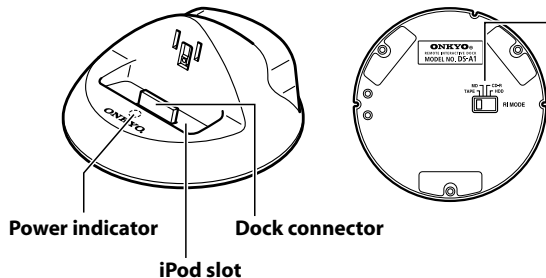
#### ■ Made for:

- **iPod photo** (software 1.0 or later)
- **iPod mini** (software 1.2 or later)
- **4th Generation iPod with Click Wheel** (software 3.0.2 or later)
- **3rd Generation iPod with touch wheel and buttons** (software 2.2 or later)

#### Notes:

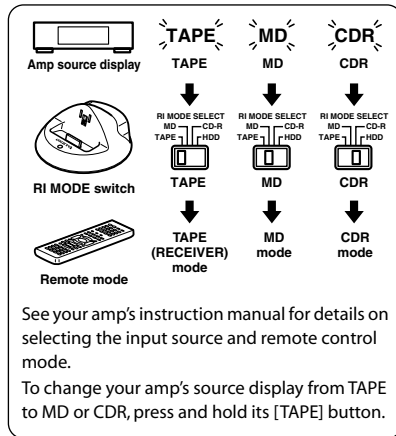
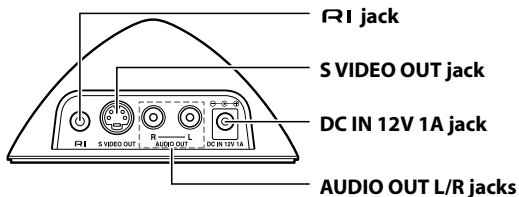
- Before using the RI Dock, update your iPod with the latest software, available from the Apple Web site at: [www.apple.com](http://www.apple.com)

## Getting to Know the RI Dock



### RI MODE switch

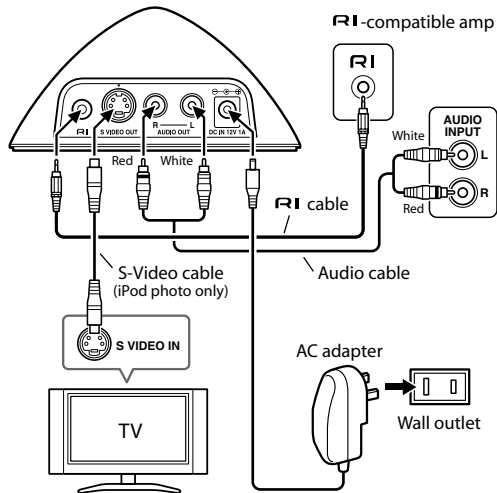
Set it to match the amp input and remote control mode (see below).



## Hooking Up the RI Dock

1. Using the supplied audio cable, connect the RI Dock's AUDIO OUT L/R jacks to your amp's TAPE (MD, CDR) IN jacks.
2. Using the supplied RI cable, connect the RI Dock's RI jack to an RI jack on one of the Onkyo components in your system.
3. If you have an iPod photo, connect the RI Dock's S VIDEO jack to an S-Video input on your Onkyo AV receiver or TV. See page 11 for more information.
4. Connect the AC adapter to the RI Dock's DC IN jack.
5. Connect the appropriate AC plug adapter to the AC adapter (may already be connected), and plug the AC adapter into a suitable wall outlet.

**Note:** When the AC adapter is unplugged or not connected to the RI Dock, the RI Dock will output no sound or video, RI functions will not work, and your iPod battery will not be charged.

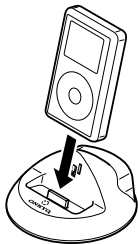




# Using the RI Dock

## Putting Your iPod in the RI Dock

- Align your iPod with the RI Dock's iPod slot, and carefully place your iPod in the slot, as shown. The iPod's dock connector will fit securely onto the RI Dock's dock connector.



- Depending on the type of iPod, you may need to insert one of the supplied iPod adapters into the RI Dock's iPod slot, as shown, before inserting your iPod.



iPod mini adapter



Other iPod adapters

### Notes:

- To prevent dock connector damage, don't twist your iPod when inserting or removing it, and be careful not to knock over the RI Dock when your iPod is inserted.
- Don't use with any other iPod accessories, such as FM transmitters and microphones, because they may cause a malfunction.
- When you insert your iPod, the RI Dock will turn on and its Power indicator will light up.

### Function Overview

#### ■ Basic Operation

You can use your amp's remote controller to control basic iPod functions such as Play, Pause, Next Song, Previous Song, and so on.

Depending on your amp and generation of iPod, you may also be able to use the following functions.

#### • System On Function

When you turn on your amp, the RI Dock and your iPod turn on as well. With some components, you may need to press your remote controller's [ON] button twice to turn on the other devices in your system. With 3rd generation iPods, only the RI Dock is turned on.

#### • System Off Function

When you turn off your amp, the RI Dock and iPod turn off as well.

#### • Auto Power On Function

If you press your remote controller's Play [▶] button while your amp is on Standby, your amp will automatically turn on and select your iPod as the input source. Then, your iPod will start playback.

With a 3rd generation iPod, you can use the remote controller's Play [▶] or Pause [■] button to do this.

#### • Direct Change Function

If you start iPod playback using your remote controller while listening to another input source, your amp will automatically select your iPod as the input source.

With a 3rd generation iPod, you can use the remote controller's Play [▶] or Pause [■] button to do this.

#### • Timer Play

You can use your amp's Timer function to turn on your amp and iPod and start playback at a specified time.

Not supported by 3rd generation iPods.

### • **Linked Dimmer Operation**

When you use your amp's Dimmer function to change its display's brightness, the brightness of the RI Dock's Power indicator will change as well.

### • **Other Remote Controller Functions**

See pages 12 and 13 for other iPod functions you can control with your remote controller.

### ■ **Operating Notes**

- Use your amp's volume control to set the volume.
- When your iPod is in the RI Dock, its volume control has no effect.
- When you use your iPod with earphones, make sure the iPod's volume control is not set too high before you connect your earphones.
- The RI Dock must be connected to your amp with both an **RI** cable and an audio cable to use these functions.
- If your amp doesn't support the System On, System Off, Auto Power On, and Direct Change functions, you'll need to turn your amp on and off manually and select the appropriate input source.

### ■ **iPod photo Notes**

- If you have an iPod photo, and have connected the RI Dock's S VIDEO jack to an S-Video input on your AV receiver, you might need to assign that video input to the TAPE (MD, CDR) input source. See your AV receiver's instruction manual for details.
- If your AV receiver doesn't allow you to assign video inputs to input sources, connect the RI Dock's S VIDEO jack to the AV receiver's VIDEO 2 IN jack. When you want to enjoy an iPod slideshow with music, first select the VIDEO 2 input source, and then select the TAPE input source. Your AV receiver will output the audio being fed to the TAPE IN, and because the video source doesn't change when the TAPE input source is selected, it'll continue to output the video being fed to the VIDEO 2 IN.

### Controlling Your iPod

The following table shows which remote controller buttons to use to control your iPod. Be sure to select the appropriate remote mode first, and point your remote controller at your amp. Note that some buttons may be labelled differently, and some remote controllers may not have certain buttons.

iPod function	Remote controller button to use				Description
	TAPE mode	MD mode	CDR mode	HDD mode	
<b>Turn on/off</b>	[STANDBY], [ON]			—	If the RI Dock is on Standby, both it and the iPod are turned on (3rd generation iPods do not turn on). If the RI Dock is on, it goes on Standby and the iPod is turned off.
<b>Play</b>	Play [▶]				Starts playback on the iPod. If the iPod is not already on, it's turned on automatically. (On 3rd generation iPods, works as Play/Pause.)
<b>Pause</b>	Pause [■], Stop [■]			Pause [■]	Pauses iPod playback. (On 3rd generation iPods, works as Play/Pause.)
<b>Next song</b>	[▶▶], [▶▶]	Next [▶▶]			Selects the next iPod song.
<b>Previous song</b>	[◀◀], [◀◀]	Previous [◀◀]			Restarts the current iPod song. Press it twice to select the previous song.
<b>Fast forward</b>	—	Fast Forward [▶▶]			Press and hold to fast forward the iPod.
<b>Rewind</b>	—	Rewind [◀◀]			Press and hold to rewind the iPod.

\* With 3rd generation iPods, some functions may not work even with the latest software.

\* As of April 2005, no remote controllers support the HDD mode.

\* To select the next or previous photo in an iPod photo slideshow, use the controls on your iPod photo.

## Using the RI Dock—Continued

These functions can be used with the iPod photo, iPod mini, and 4th generation iPods, when used with certain Onkyo amps.

iPod function	Remote controller button to use				Description
	TAPE mode	MD mode	CDR mode	HDD mode	
<b>Shuffle</b>	[DOLBY MODE]	[RANDOM], [PLAYMODE], [SHUFFLE]			Sets the iPod's Shuffle function to: Songs, Albums, or Off.
<b>Repeat</b>	[REVERSE MODE]	[REPEAT]			Sets the iPod's Repeat function to: One, All, or Off.
<b>Backlight</b>	REC [●]	[DISPLAY], [SCROLL]			The iPod's backlight comes on for 30 seconds.
<b>Playlist/Album mode</b>	Reverse Play [◀]	[ENTER], [PROGRAM], [MEMORY]		—	To use the following functions with modes other than HDD, first select Playlist/Album mode using the buttons in this row, and then press the appropriate button within 5 seconds, while the RI Dock's Power indicator is flashing.
<b>Next playlist</b>	Fast Forward [▶▶]			[PLAYLIST UP]	Selects the next playlist on the iPod. Select Playlist/Album mode first (see above).
<b>Previous playlist</b>	Rewind [◀◀]			[PLAYLIST DOWN]	Selects the previous playlist on the iPod. Select Playlist/Album mode first (see above).
<b>Next album</b>	Next [▶▶]			[ALBUM UP]	Selects the next album on the iPod. Select Playlist/Album mode first (see above).
<b>Previous album</b>	Previous [◀◀]			[ALBUM DOWN]	Selects the previous album on the iPod. Select Playlist/Album mode first (see above).

\* Depending on your amp, some buttons may not work as expected.

### iPod Functions

#### Starting Playback on Your iPod

---

If you start playback on your iPod, your amp's input source will automatically switch to the input to which your iPod is connected. If your amp is on Standby, it will automatically turn on first.

#### Using Your iPod's Alarm Clock

---

You can use your iPod's Alarm Clock function to automatically turn on your iPod and amp at a specified time. Your amp's input source will automatically be set to the input to which your iPod is connected.

##### Notes:

- To use these functions, your iPod must be in the RI Dock, and the RI Dock must be connected to your amp with both an **RI** cable and an audio cable.
- When you use these functions, be sure to set your amp's volume control to a suitable level.

- Your amp may take several seconds to startup, so you might not hear the first few seconds of the first song.
- When you select a different input source, stop playback on your iPod to prevent your amp from selecting the iPod input source by mistake.
- If any accessories are connected to your iPod, your amp may not be able to select the input source properly.

#### Charging Your iPod Battery

---

The RI Dock charges your iPod battery while your iPod is in the RI Dock.

##### Notes:

- To charge your iPod battery, the AC adapter must be plugged into a suitable wall outlet, and connected to the RI Dock's DC IN jack.
- Your iPod battery will be charged even when the RI Dock's Power indicator is off.
- See your iPod's instruction manual for more information on battery charging.

## Troubleshooting

---

### ■ There's no sound

- Make sure your iPod is playing.
- Make sure the iPod is inserted properly in the RI Dock.
- Make sure your amp is turned on, the correct input source is selected, and the volume is turned up.
- Make sure the cable plugs are pushed in all the way.
- Make sure the AC adapter is connected to a suitable wall outlet and connected to the RI Dock.

### ■ The remote controller doesn't control the iPod

- Make sure the iPod is properly inserted in the RI Dock.
- If your remote controller has remote mode buttons, make sure you've selected the right mode.
- Check the position of the RI Dock's RI MODE switch.
- When you operate your iPod, point your remote controller at your amp.
- The RI Dock must be connected to your amp with both an **RI** cable and an audio cable.
- The TAPE IN on some amps can be set to TAPE, MD, or CDR. Make sure the RI Dock's RI MODE switch and remote control mode match this setting. See your amp's manual for more information.

If you still can't control your iPod, start playback by pressing your iPod's Play button. Remote operation should then be possible.

## Specifications

---

Power supply:	AC adapter (12 V DC)
Power consumption:	0.4 W (iPod not inserted)
Weight:	220 g
Dimensions (W x H x D):	11.2 x 5.6 x 11.2 cm
Connectors:	S VIDEO OUT, AUDIO OUT L/R, <b>RI</b> jack

Specifications and features are subject to change without notice.

- The operating instructions in this manual apply to the iPod as of April 2005, and may change with future upgrades to the iPod software.
- The AC adapter (IU15-2120100-WP) supplied with the RI Dock is designed exclusively for use with the RI Dock. Do not use it with another device. Likewise, do not use any other AC adapter with the RI Dock. Doing so may damage the RI Dock.
- If there's any noise when listening to an FM or AM radio station with your tuner or receiver, try moving the antenna away from the RI Dock, iPod, and AC adapter's cable. In addition, do not twist the AC adapter's cable around any other cables.

# ONKYO CORPORATION

Sales & Product Planning Div. : 2-1, Nisshin-cho, Neyagawa-shi, OSAKA 572-8540, JAPAN  
Tel: 072-831-8023 Fax: 072-831-8124

## ONKYO U.S.A. CORPORATION

18 Park Way, Upper Saddle River, N.J. 07458, U.S.A.  
Tel: 201-785-2600 Fax: 201-785-2650 <http://www.us.onkyo.com/>

## ONKYO EUROPE ELECTRONICS GmbH

Liegnitzerstrasse 6, 82194 Groebenzell, GERMANY  
Tel: +49-8142-4401-0 Fax: +49-8142-4401-555 <http://www.eu.onkyo.com/>

## ONKYO EUROPE UK Office

Suite 1, Gregories Court, Gregories Road, Beaconsfield, Buckinghamshire, HP9 1HQ  
UNITED KINGDOM Tel: +44-(0)1494-681515 Fax: +44(0)-1494-680452

## ONKYO CHINA LIMITED

Units 2102-2107, Metroplaza Tower I, 223 Hing Fong Road, Kwai Chung,  
N.T., HONG KONG Tel: 852-2429-3118 Fax: 852-2428-9039  
<http://www.ch.onkyo.com/>

SN 29344061

(C) Copyright 2005 ONKYO CORPORATION Japan. All rights reserved.



<http://www.onkyo.com/>

Printed in Japan  
I0504-1



\* 2 9 3 4 4 0 6 1 \*



# Onkyo Remote Controller Compatibility

The RI Dock can be used with any Onkyo remote controller that has the capability to control an Onkyo **RI** cassette tape deck, MD recorder, or CD recorder. This type of remote controller is supplied with **RI**-compatible Onkyo AV receivers and separate collection amps and receivers. See your receiver's or amp's instruction manual for more information. The following table shows which **RI** functions are supported by Onkyo AV receivers.

Selected mode	Basic RI functions		Model
	Play, Stop, Next, Previous, Volume	Auto Power On/Off and Direct Change <sup>a</sup>	
Tape	✓	✗	TX-DS777, TX-DS989 (Sleep Timer and iPod Alarm not supported) TX-8211, TX-8511
		✓	<b>AV receivers:</b> TX-DS494, TX-DS595, TX-DS696, TX-DS797, TX-DS898, TX-SR302, TX-SR500, TX-SR501, TX-SR502, TX-SR600, TX-SR601, TX-SR602, TX-SR700, TX-SR701, TX-SR702, TX-SR800, TX-NR801, TX-NR900, TX-NR901, TX-NR1000. <b>Systems:</b> CS-210, MC-35TECH <b>AV receivers from 2005 onward:</b> TX-SR303, TX-SR503, TX-SR603
Selected mode	Advanced RI functions (basic functions + Shuffle, Repeat, Playlist)		Model
MD		✓	<b>AV receivers:</b> TX-SR502, TX-SR602, TX-SR702, TX-NR801, TX-NR901, TX-NR1000 <b>AV receivers from 2005 onward:</b> TX-SR503
CDR			TX-NR901, TX-NR1000

a. Not supported by the TX-LR552

The DW-S500 and NC-500 are not supported.

■ **What to do if you've already got a cassette deck, MD recorder, CD recorder, or other component connected to the TAPE IN jacks:**

To connect and control with the remote controller both the already connected component and the RI Dock, consider the following two options. Note that the Direct Change function will only work with the TAPE input. Choose one of the following options based on which device you use the most.

**Option 1:** Connect the RI Dock to the LINE IN, TAPE2 IN, VIDEO IN, or another audio input.

**Option 2:** Connect your cassette deck, MD recorder, or CD recorder to the LINE IN/OUT, TAPE2 IN/OUT, VIDEO IN/OUT, or another audio input and output, and connect the RI Dock to the TAPE IN.

If you choose option 2 and connect the previously connected component to another input, do not disconnect its RI connection. If it's a cassette deck, remember to change your amp's source display from TAPE to MD or CDR as appropriate. (Press and hold your amp's [TAPE] button to do this.)

Whichever option you choose, be sure to set the RI Dock's RI MODE switch so that it matches the remote controller's remote mode, and use a different remote mode for the other component.

With amps such as the TX-SR500 and TX-SR501 that have a TAPE remote mode but not an MD or CDR remote mode, it's not possible to control both the RI Dock and the other component with the remote controller. In this case, you'll need to operate one of them by using its own controls.

Printed in Japan  
I0504-1

SN 29344085

(C) Copyright 2005 ONKYO CORPORATION Japan. All rights reserved.

