
Firmware Update for the DTR-20.4/DTR-30.4

To update the firmware of the AV receiver, you can choose from the following two methods: update via network, or update via USB storage. Choose the one that best suits your environment. Before proceeding with the update, please read the corresponding explanations carefully.

*****IMPORTANT*****

■ **Update via network** You will need a wired Internet connection to update the firmware.

■ **Update via USB storage** Please prepare a USB storage device such as a USB flash memory stick. You need at least 32 MB of available space to update the firmware

Precautions for your Firmware Update

Please enter [NET] mode before starting the update.

The firmware update may fail if an external HDMI control signal is input during the update procedure. Please be sure to turn off the HDMI control function (RIHD) on your A/V receiver before starting the update.

How to turn off RIHD:

In the Main menu select "Hardware Setup", then "HDMI".

Set "HDMI Control" to OFF

- The firmware update should take 15 to 40 minutes (depending on receiver model). Once the update begins, don't turn off the power supply to the A/V receiver until it is time to restart it

- Depending on the conditions of the network, a firmware update via a network may take more than one hour or even fail to finish. If the update is not completed within two hours, turn off the power supply by pushing the ON/STANDBY button and then try updating again from the beginning

- Updating the firmware and adjusting the settings will be done automatically, but may take some time to complete. Please follow the procedures as instructed when you update. Note that the update may fail, or cause problems for your A/V receiver, if you do any of the following:

- Pull out the A/V receiver's power cord;
- Interrupt the power supply to the A/V receiver (e.g. if the breaker is tripped or if there is an electrical outage);
- Insert or remove the LAN cable from a device in your network when updating over a network;
- Insert or remove a USB memory device from the A/V receiver when updating via USB;
- Operate components connected to the A/V receiver via HDMI, such as a TV or a recording device.

If you see "No Update" on the front panel immediately after you have started the firmware update process, you have the latest firmware. In this case it is not necessary to do this update.

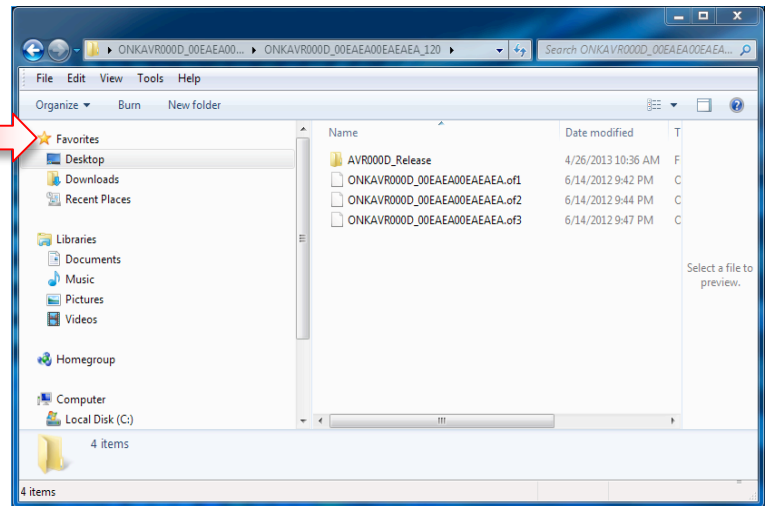
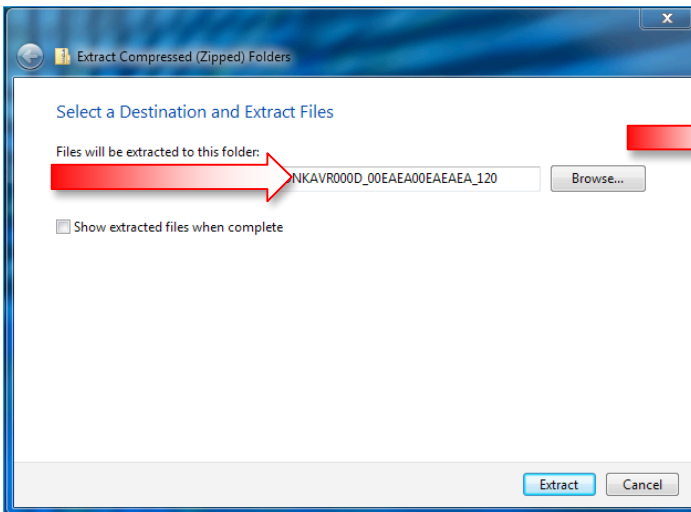
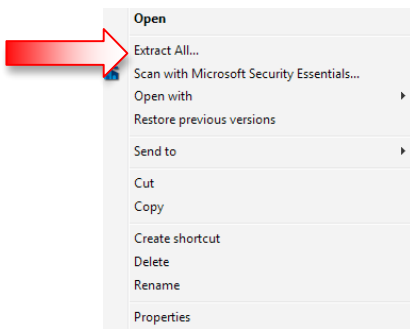
Limitation of liability

The program and accompanying online documentation are furnished to you for use at your own risk. Integra will not be liable and you will have no remedy for damages for any claim of any kind whatsoever concerning your use of the program or the accompanying online documentation, regardless of legal theory, and whether arising in tort or contract. In no event will Integra be liable to you or any third party for any special, indirect, incidental, or consequential damages of any kind, including, but not limited to, compensation, reimbursement or damages on account of the loss of present or prospective profits, loss of data, or for any other reason whatsoever.

DTR-20.4 / DTR-30.4 Firmware Update **1161-3110-0500**

Step 1- How to prepare the USB Memory Device:

1. Download the zipped firmware update file and save to the Desktop of your computer
http://download.onkyo.com/AVR000D/ONKAVR000D_00EAEA00EAEAEA_124.zip
File name: ONKAVR000D_00EAEA00EAEAEA_124.zip
2. Right click on the file and select "Extract All" and place the extracted folder on the Desktop of your computer:



3. Connect the USB Memory Device to the USB port of your computer and copy the **contents of the unzipped/extracted folder** onto your USB Memory Device.

4. Safely eject the USB Memory Device from your computer.

The product that you are using may have unexpected issue which will be addressed by this F/W update
Please check your FW version below and proceed for the FW update.

Step 2- How to upgrade the firmware:

1. Turn on the DTR-20.4, DTR-30.4, select the USB input, and wait for the “Now Initializing...” process to complete (35-45 seconds).
2. Insert the USB Memory Device containing the software into the front panel USB port of the DTR-20.4, DTR-30.4.
3. From the front panel press and hold the “USB” input button, followed by the “On/Standby” button. Unit will display “**Update via USB?**”
4. Press the “Enter” button on the front panel to begin the update.
5. Once the update has completed check the firmware version to confirm that the unit is fully up to date. If it is not, run the update again (some units may require 2 firmware updates).
Current firmware version: **1161-3110-0500**

To check the firmware version, press the “Home” button on the remote control. Highlight “F/W Update” or select the “Firmware Update” icon and press enter. The current firmware version will be displayed on the front panel of the A/V receiver as well as the TV screen.

Firmware Update for the DTR-20.4/DTR-30.4

To check FW version, press the home button on the remote control. Highlight “F/W Update” or Firmware Update icon and press enter. FW version will be displayed on the front panel and TV.

Latest Firmware Version: **1161-3110-0500**

Information Concerning Firmware Update for Onkyo Network Receivers

Onkyo has discovered there is a possibility of failure when updating receivers to this new firmware package via ethernet in certain network environments. For this reason, we are now only releasing a firmware file for installation via USB port / flash memory device.

Users should first check to see if their network receiver is running the firmware (**1130-9106-0300 or 1130-9106-0301 released August 10, 2012**) before installing this update via USB. If your network receiver is not running firmware version **1130-9106-0300 or 1130-9106-0301**, please update your receiver to this version via the network facility before proceeding further.

If your receiver is running more recent firmware, there is no need to update via network facility. You can judge whether older or newer by the first three digits.

To check your firmware version, press the “Home” button on your remote control. Highlight “F/W Update” or select the “Firmware Update” icon and press enter. Your current firmware version will be displayed on the front panel of your A/V receiver as well as your TV screen.

[Should you encounter any difficulties when performing this update, please contact us.](#)

We appreciate your understanding and apologize for any inconvenience this issue may cause.

The 10/18/2013 update will address the following: UPDATE AVAILABLE ONLY via USB (US ONLY)

1. Corrects lock up failure when using MiCasaVerde Vera Lite controller on the same network

The 08/28/2013 update will address the following: UPDATE AVAILABLE ONLY via USB

1. Improves picture output of 4K up-scaling;
2. Format change of Rhapsody is scheduled in the near future. To correspond this change, you should apply this update.

The 04/11/2013 update will address the following: UPDATE AVAILABLE ONLY via USB

1. Improves the operation when HDMI Through is set to on

The 10/09/2012 update will address the following:

1. Improves problem of HDMI video output no longer working
2. Supports Integra Remote2 for iOS version: 1.30 or later;
3. Adds support audio streaming from iOS device
4. Supports Integra Remote for Android version: 1.30 or later;
*it is also necessary to update the App;
5. Adds support of Home Media Function (Samba Server); Playing music files like Apple Lossless via network/USB becomes possible;

Additional Audio file format:

Apple Lossless (.m4a/.mp4/.M4A/.MP4)

- Sampling rates of 8 kHz, 11.025 kHz, 12 kHz, 16 kHz, 22.05 kHz, 24 kHz, 32 kHz, 44.1 kHz, 48 kHz, 64 kHz, 88.2 kHz and 96 kHz are supported.
- Quantization bit: 16 bit, 24 bit DSD (.dsf or .DSF)

Firmware Update for the DTR-20.4/DTR-30.4

- The sampling rate of 2.8224 MHz is supported.
- Dolby True HD (.vr/.mlp/.VR/.MLP)*
- Sampling rates of 48 kHz, 64 kHz, 88.2 kHz, 96 kHz, 176.4 kHz and 192 kHz are supported.

*Playing Dolby True HD files at rear USB port is not supported.

Notice:

Limitation of when using UWF-1

1. Only 64 kHz and less sampling rate is supported
2. Dolby TrueHD and DSD is not supported
3. Using rear USB port is not supported

The 8/10 /2012 update will address the following:

1. Improves operation of "Power on" of remote control

The 6/26 /12 update will address the following:

1. Corrects problem of HDMI video output no longer working while the "Network Standby" setting is enabled
***See below for further important details**
2. Adds UBT-1 support (only if 6/15 FW update wasn't done)

***IMPORTANT NOTICE**

1. If the current F/W version of your receiver ***IS*** listed above, this update will occur in 2 parts.
 - a. The 1st part of the update ***WILL CLEAR*** the settings and restore the unit to ***factory default setting***. Initial set-up must be performed again including Network setting and Audyssey calibration.
 - b. Once the network settings are re-established, the 2nd portion of the update will occur. Settings ***WILL NOT*** be cleared as a result of this 2nd portion.
 - c. It is recommended to proceed with these FW update via USB
2. If the current F/W version of your receiver ***IS NOT*** listed above, only the later F/W update will be processed. Settings ***WILL NOT*** be cleared as a result of this portion.
 - a. It is recommended to proceed with these FW update via USB

Once these updates are completed, the receivers F/W version will be **1110-8106-0300**

The 6/15 /12 update will address the following:

2. Corrects unexpected instance where a portion of the internal memory may stop working during operation.
***See below for further important details**
3. Adds UBT-1 Support

The 06/08/12 update addresses the following:

1. Corrects unexpected instance where a portion of the internal memory may stop working during operation.

*Please note below.

All Setting will be cleared after this update. Initial set-up must be performed again including Audyssey calibration.

Firmware Update for the DTR-20.4/DTR-30.4

The 05/18/12 update addresses the following:

1. Corrects problem of video output not working properly when connected to particular DVD/Blu-ray players through the AUX HDMI/MHL input (front HDMI input)
2. Supports Onkyo Remote App for Android version: 1.10 or later;
*it is also necessary to update the App;
3. Supports Onkyo Remote2 for iOS version: 1.05 or later;
*it is also necessary to update the App;
4. Improves the operation of NET/USB-related functions;
5. Improves the operation of InstaPrevue functions;

The latest update includes all prior updates.

We hope you enjoy the improved functionality this update provides to your AV Receiver.